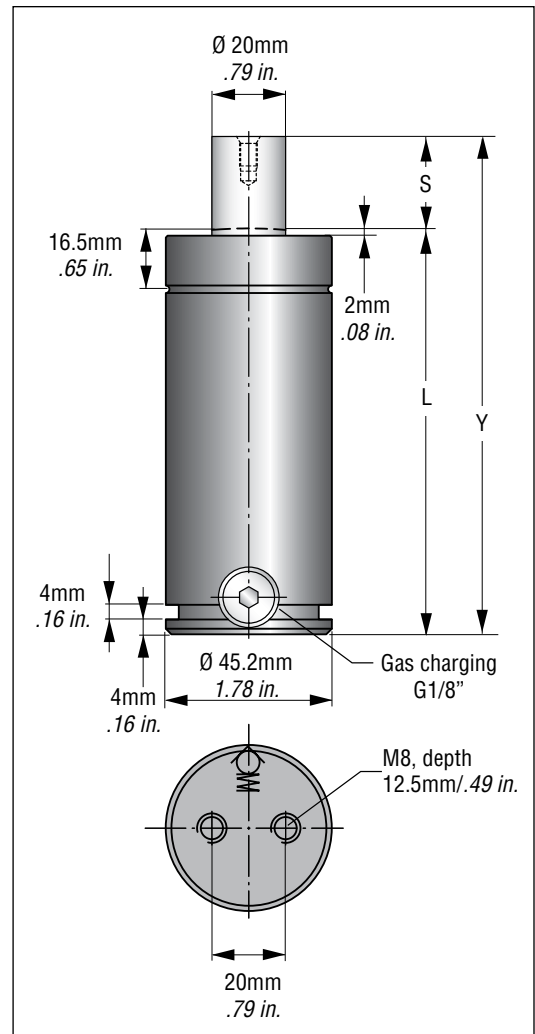


GM
Ford
Chrysler
NAAMS
ISO

Dimensional Information								
Hyson Part No.	Stroke		Contact Force		L		Y	
	mm	in.	N	lbs.	mm	in.	mm	in.
NP-500X10	10	0.39	4700	1055	95	3.74	105	4.13
NP-500X13	12.7	0.50			97.7	3.85	110.4	4.35
NP-500X25	25	0.98			110	4.33	135	5.31
NP-500X38	38.1	1.50			123.1	4.85	161.2	6.35
NP-500X50	50	1.97			135	5.31	185	7.28
NP-500X63	63.5	2.50			148.5	5.85	212	8.35
NP-500X80	80	3.15			165	6.50	245	9.65
NP-500X100	100	3.94			185	7.28	285	11.22
NP-500X125	125	4.92			210	8.27	335	13.19
NP-500X160	160	6.30			245	9.65	405	15.94

Y=±.25 mm/.010 in.



Product Specifications

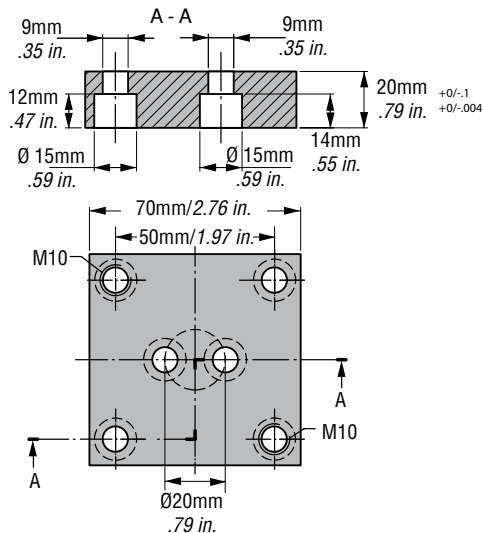
Pressure Medium Nitrogen
 Max. Charging Pressure..... 150 bar/2175 psi
 Min. Charging Pressure..... 25 bar/360 psi
 Operating Temperature 0-80°C/0-176°F
 Recommended Strokes/Min..... ~40-80
 Max. Piston Rod Velocity 96 m/min / 315 ft/min
 Maximum Utilized Stroke..... 100%

T2ISO-500

Mounting Options

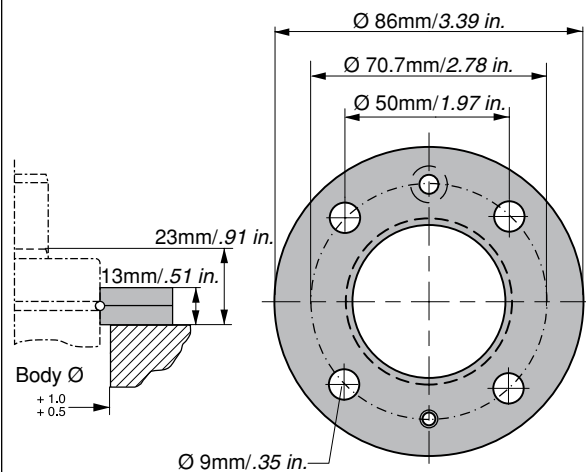
MP Bottom Mounting Plate

P/N T2-500-MP



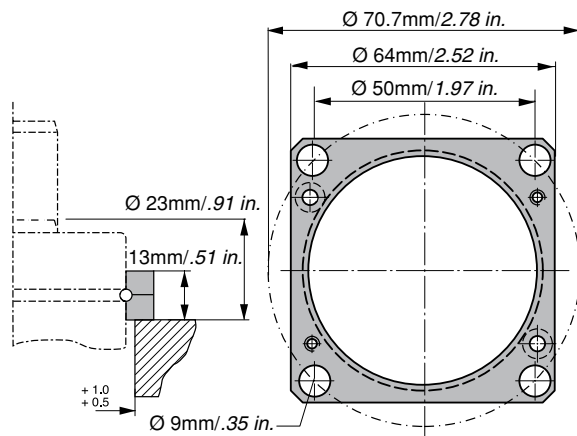
FC Upper Round Flange

P/N T2-500-FC



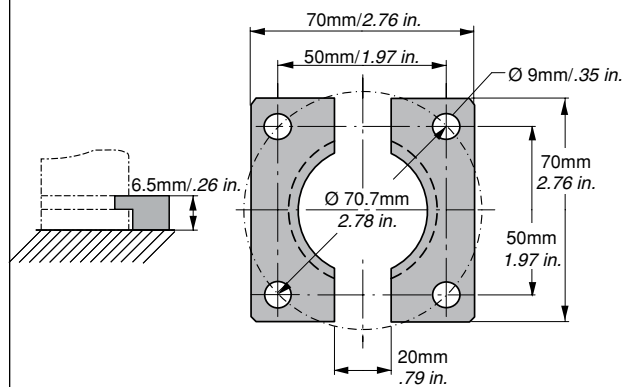
FCS Upper Square Flange

P/N T2-500-FCS



FFC Lower Square Flange

P/N T2-500-FFC



Hyson® Products
Associated Spring



10367 Brecksville Road, Brecksville, Ohio 44141 USA

Toll Free: 1-800-876-4976 • Tel: 440-526-5900 • FAX: 440-838-7684 • Email: hyson@asbg.com • www.hysonproducts.com

© 2006 Hyson Products
NP5002M1206